



Texas Skyward User Group Conference

SkyBuild for IT



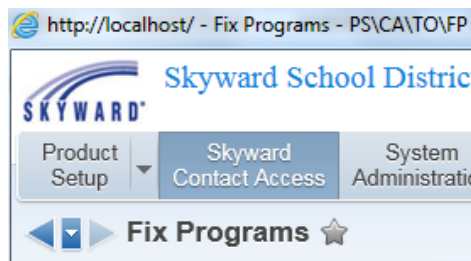
Leverage the power of SkyBuild in your IT tool box. Learn how you can create custom data files that you can use with Active Directory to create Users, Groups and even disable accounts. See how easy it is to update Destiny and much more.

- FTP Connections
- SkyBuild Staff Import
- SkyBuild Employee Import
- Link to Student/Finance Database
- SkyBuild Imports/Exports

FTP Connections

FTP Connections		
Views: General Filters: *Skyward Default		
Description ▲	Host	Path
Central Cambria 2574363	ftp.paschoolmeals.com	
sunset ridge level data	sftp.leveldata.com	staffsync/
Yellow Folder	sftp.springcm.com	/!CSV Updates,

- Data Mining and SkyBuild
- Imports and Exports
- Setup included in templates or in Scheduled Tasks



FTP Connections for import/export options

Import File

Import File Type: UNC FTP Upload

Protocol: FTP (with TLS/SSL) SFTP (with SSH)

Host:

Port:

Path & File: ?

Username:

Password:

Export Location ?

Save Exported Files in Database UNC Path

FTP Files

Protocol: FTP (with TLS/SSL) SFTP (with SSH)

Host:

Port:

Path: ?

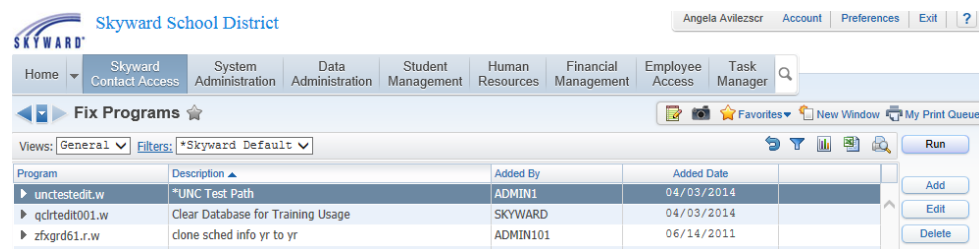
Username:

Password:

Export with UTF-8 Encoding

UNC Path Testing

- Product Setup -> Contact Access -> Tools -> Fix Programs -> Add -> Program: **unctestedit.w** -> Save -> Run



Skyward School District

Angela Avilezscr Account Preferences Exit ?

Home Skyward Contact Access System Administration Data Administration Student Management Human Resources Financial Management Employee Access Task Manager

Fix Programs Favorites New Window My Print Queue

Views: General Filters: *Skyward Default

Program	Description	Added By	Added Date
unctestedit.w	*UNC Test Path	ADMIN1	04/03/2014
qcdrtedit001.w	Clear Database for Training Usage	SKYWARD	04/03/2014
zfxgrd61.r.w	clone sched info yr to yr	ADMIN101	06/14/2011

Run Add Edit Delete

Test a UNC Path

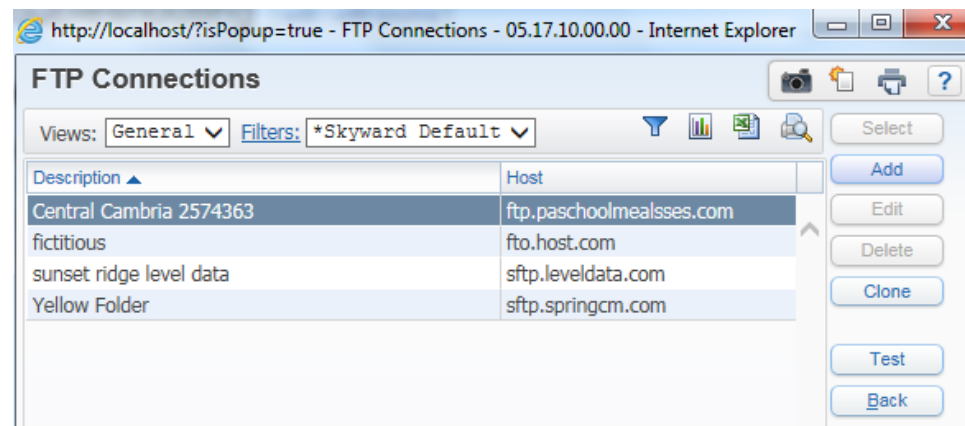
Test a UNC Path

UNC Path (\\server\share)test.txt):

Test UNC from the Print Queue
 Test UNC from the Current Web Server

Able to write to location
 Able to delete from location

Test an FTP Connection



Curl command behind the scenes could be:

```
?:\skyward\ocx\curl.exe -o
"c:\skyward\wrk\filename.nnn" -u
"username:password" --ssl-reqd -k --connect-
timeout 10 --mac-time 14400 -v
"ftp://ftp.dns.com:21/export/filename.nnn"
```


SkyBuild Employee Import

Employee Import Tool will automate the import of employee users in a Business database. This import tool is known as the Applicant Import Utility. This utility imports employees from an import file. The Applicant Import Utility is a licensed feature that is available since June 2016 Release.

349	Third Party Applicant Import	Applicant Impr
Expand All Collapse All View Printable Details		
▼ Menu Available View All Available Menus		
Path	Menu ID	Menu ID Name
WHIEP\EI	32885	Applicant Import
WHIEP\ENTP	32886	Third Party Import
WHIEP\ENTP\SF	32887	Select File for Import
WHIEP\ENTP\VF	32888	Validate Selected File
WHIEP\ENTP\GW	32889	Create Applicant Workfiles
WHIEP\ENTP\MP	32890	Move Applicants to Profile
WHIEP\ENSE	32891	Setup
WHIEP\ENSE\FI	32892	File Layout
WHIEP\ENSE\CR	32893	Cross References
WHIEP\ENSE\SE	32917	Applicant Import Setup
WHIEP\ENSE\NO	32938	Notification Setup
WHIEP\ENSE\TM	32939	Task Manager Setup
Total number of menus available: 12		

SkyBuild Imports/Exports

- Pre-defined Interfaces
- Share Interfaces
- Import Interfaces
- Clone Interfaces



Texas Skyward User Group Conference

THANK YOU FOR ATTENDING!

