



Texas Skyward User Group Conference

# Technical Intro to Skyward Part 2

# Technical Introduction to Skyward



- Database Administrative Tools
- Database Administrative Tasks
- Database Backup/Recovery Tools
- Skyward PaC Client
- Skyward Web Products
- Skyward Administration Tasks

## Database Administrative Tools

- OpenEdge® Explorer / Management Tool
- Progress® Promon/DATAMON Utility
- Using Promon/DATAMON

```

OpenEdge MONITOR Release 10
Database: C:\Skyward\Data\SKYWARD

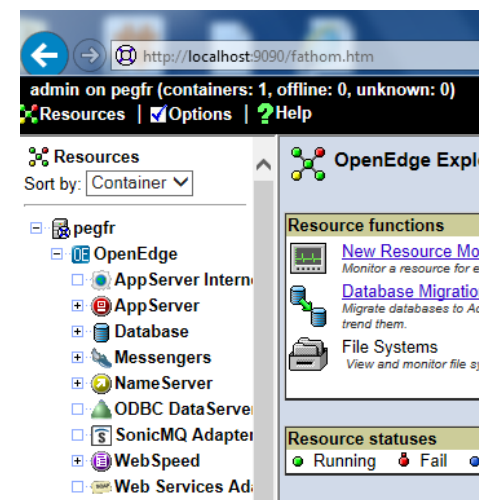
1. User Control
2. Locking and Waiting Statistics
3. Block Access
4. Record Locking Table
5. Activity
6. Shared Resources
7. Database Status
8. Shut Down Database

R&D. Advanced options
  1. 2PC Transactions Control
  L. Resolve 2PC Limbo Transactions
  C. 2PC Coordinator Information

J. Resolve JTA Transactions

M. Modify Defaults
Q. Quit

Enter your selection:
  
```



## Database Administrative Tasks

- Checking Database and Component Status
- Checking Appserver™ / Webserver Status
- Checking NS1 Status
- Checking Status for a Database, Broker, or NameServer
- Starting and Stopping the Skyward Databases

---

---

---

---

---

---

---

---

---

---

---

---

---

---

---

---

---

---

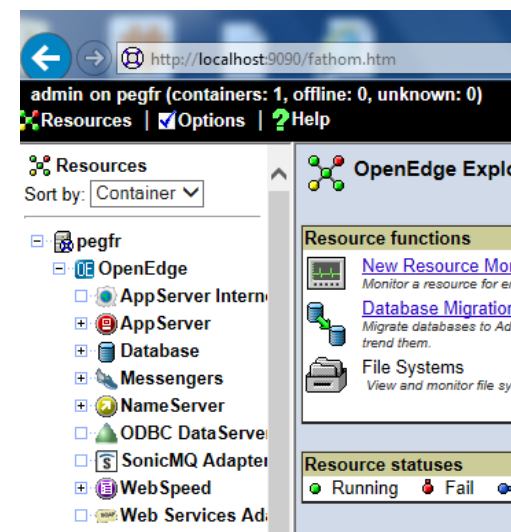
---

---

---

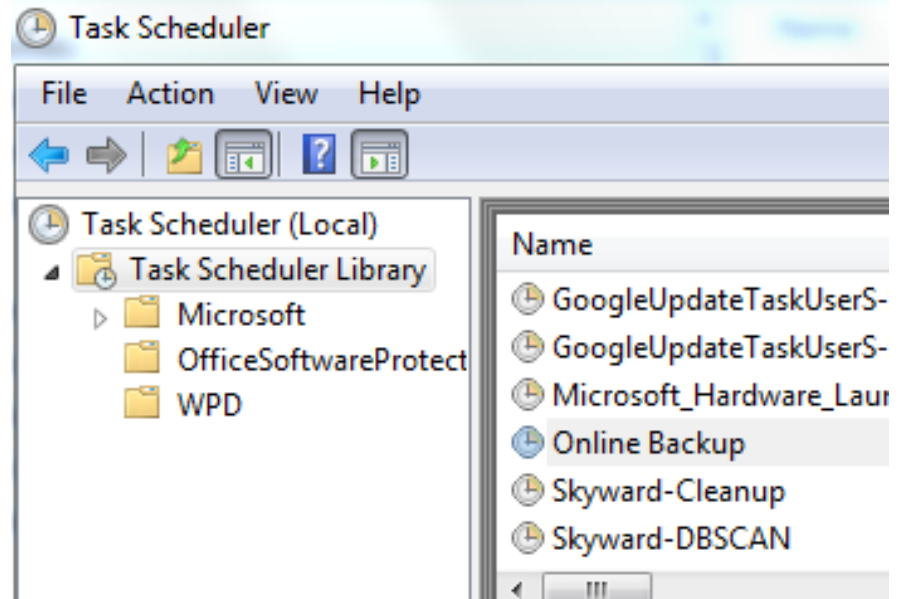
---

---



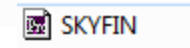
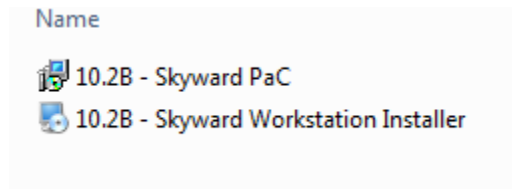
## Database Backup and Recovery Tools

- Running an Unscheduled Online Backup
- Online Backups
- Database Recovery
  - Depending on how database is 'working'

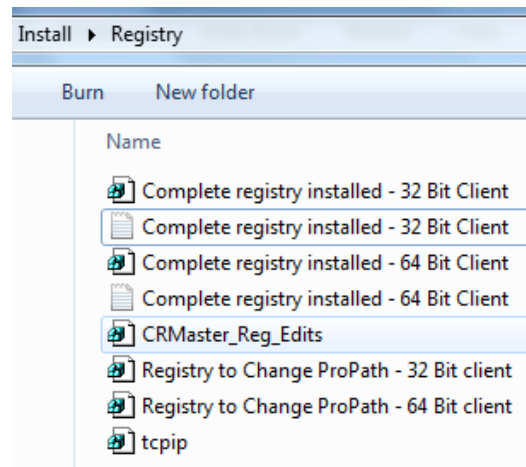


## Skyward® PaC™ Client

- Skyward Business Customers Only or POS workstations
- Client Parameter File (.pf)
- Registry Settings and Required Permissions



```
-db SKYWARD
-p common\qqqmai01.p
-H localhost
-s 22500
```





## •Skyward Web Server Configuration/Security Options (Firewalls)

---

---

---

---

---

---

---

---

---

---

---

---

---

---

---

---

---

---

---

---

---

---

---

---

---

---

<b>Common Skyward FireWall Ports</b>	<b>Database Port Range</b>	2702
Default ports listed	TCP	<b>Student Monolith CAS</b>
Actual ports can be located through Progress Explorer Tool or OpenEdge Explorer / Management on the Skyward Database server.	Inbound/Outbound	TCP
	3000 - 5000	Inbound
	<b>Webspeed Broker</b>	2600
	TCP	<b>Finance Monolith CAS</b>
	Inbound	TCP
	Dynamically created for each broker, look up port in OpenEdge Explorer	Inbound
	<b>WebSpeed Port Range</b>	2601
	TCP	<b>OpenEdge AdminService</b>
<b>NameServer/NS1</b>	Both	UDP
UDP	3202 - 3502	Inbound
Inbound	<b>Appservr Broker</b>	20931
5162	TCP	<b>Report Queue Streaming</b>
<b>Database Service Port</b>	Inbound	TCP
TCP	Dynamically created for each broker, look up port in OpenEdge Explorer	Allow CIFS file share access from Web server(s) to report server(s)
Inbound		445
Student	<b>Student Monolith DAS</b>	<b>Terminal Server</b>
12500	TCP	3389
Finance	Inbound	TCP
22500	2701	<b>All Skyward Web Products</b>
<b>SQL Database Service Port</b>	<b>Finance Monolith DAS</b>	443 (https)
TCP	TCP	TCP
Inbound	Inbound	
Student		
12501		
Finance		
22501		









Texas Skyward User Group Conference

**THANK YOU FOR ATTENDING!**

